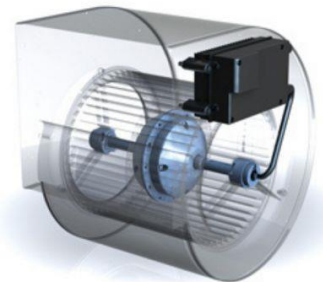


Specification of: DDMP 12/9 M6A4 DG0 400V-3F

High performance centrifugal fan DDMP

Double width, double inlet (DWDI), direct drive, forward curved blades fan. Lap-jointed scroll made of galvanized steel (EN 10142), assembled through a high-technology roller-locked seaming. Straight cut off plate at fan discharge. Impeller with forward curved blades of galvanized steel plate, directly mounted on a brushless, permanent magnets, external rotor motor, without transmission losses, dynamically balanced according to DIN ISO 21940-11. Highly-efficient 2,6kW three-phase driver sensor-less algorithm with passive EMI filters and thermal derating protection. Driver directly installed on the scroll, and factory-configured, for a plug and play solution: no further configuration is needed. Continuous speed control of the Drive System by 0 ... 10 V analogue signal, or with Modbus RS485-compliant interface. All the drive system is completely in protection class IP 54. Power source 400V – 50/60 Hz. Air performance ratings according to AMCA 210-07 (Fig. 12) and ISO 5801:1997 (Fig. 69 c and par. 30.2 f).

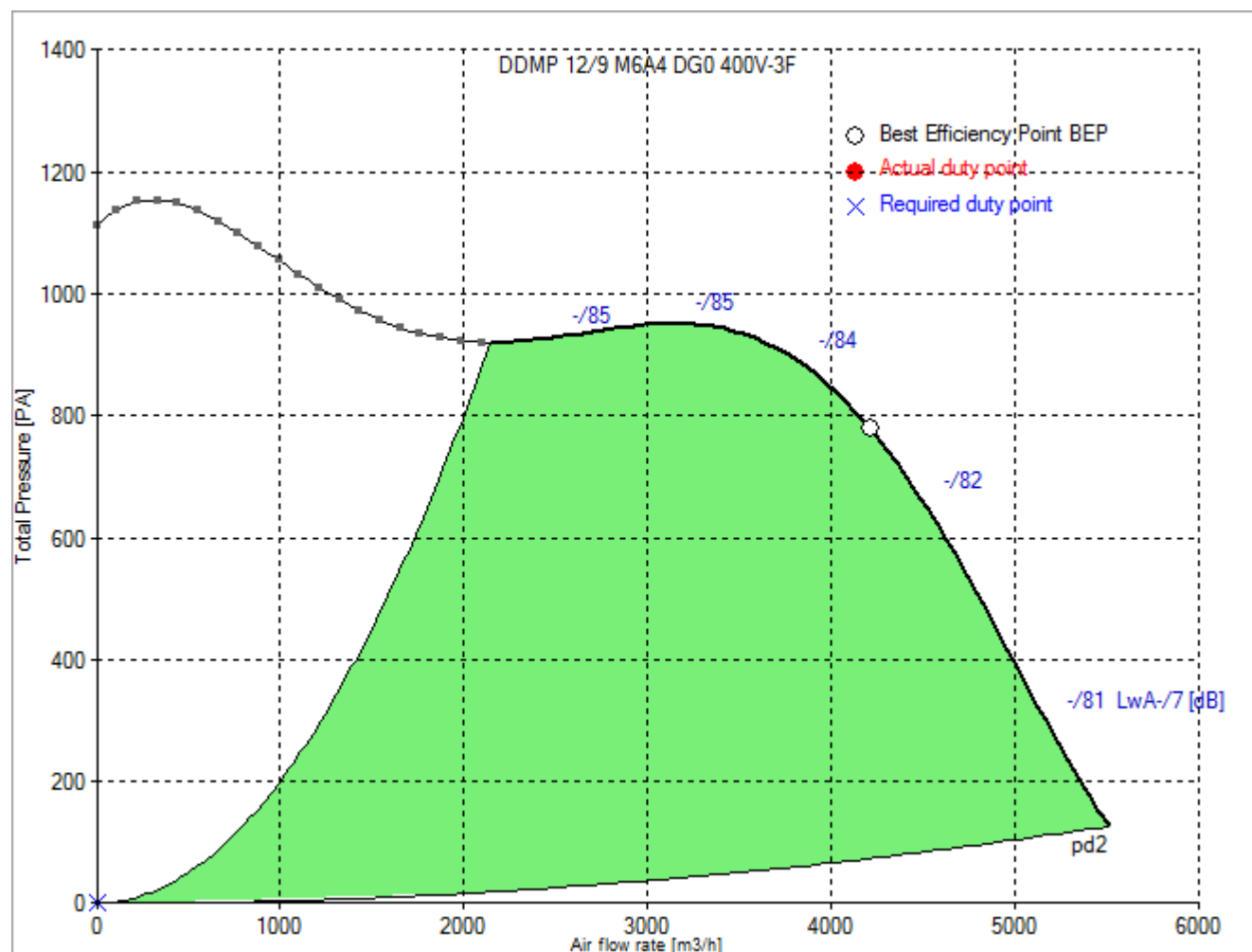


Technical data of the fan: DDMP 12/9 M6A4 DG0 400V-3F

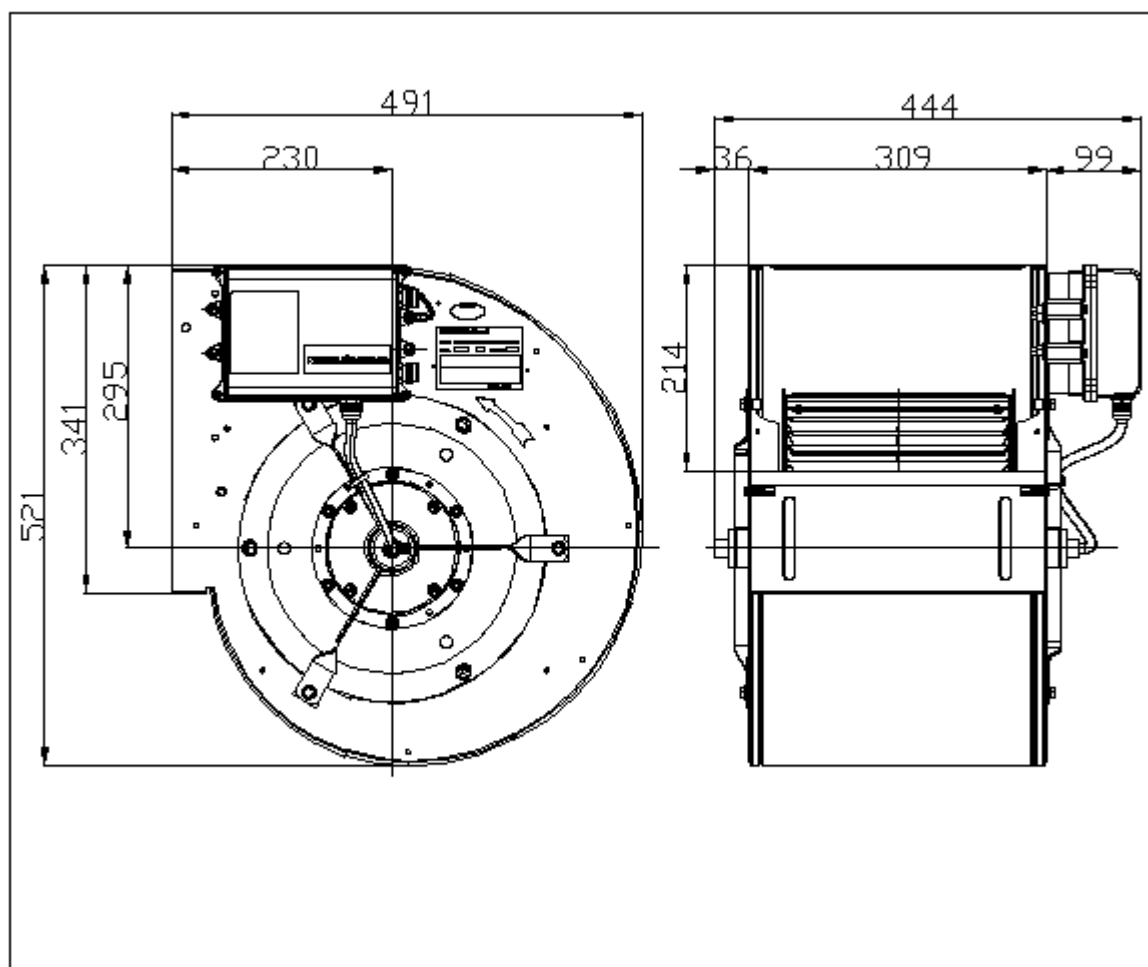
fulfills the ErP requirements 2015

Description	Value	Dimension
Specified duty point		
Actual duty point		
Installation acc. DIN 24163 Part 1	B	
Reference density (Rho1)	1.20	kg/m ³
Medium temperature (t)	20	C
Fan weight	19	kg
This duty point can only be reached by using an inverter/controller for motor speed control!		
Rated data		
Phases-Voltage-Frequency	3~400-50/60	V-Hz
Rated motor current (I _N)	N/A	A
operational limits		
Max. absorbed power (P _{1max})	1.842	kW
Temperature range of conveying medium (t _{min} ... t _{max})	-20...40	C
ErP-Data at best efficiency and density - kg/m³		
measurement- / efficiency category	B / total	
design status of VSD	VSD is integrated	
overall efficiency (ETA _{opt})	61.3	%
achieved efficiency grade (N _{ist})	66.4	
required efficiency grade in 2013 / 2015 (N)	42 / 49	
Air flow rate (V _{opt})	4216	m ³ /h
pressure rise (dp _{opt})	779	Pa
Fan speed (n _{vopt})	1334	min ⁻¹
motor power input (P _{1opt})	1.48	kW
specific ratio (d _{dpopt})	1.008	

Fan curve to DDMP 12/9 M6A4 DG0 400V-3F



Dimensions to DDMP 12/9 M6A4 DG0 400V-3F



Rotation: RD
 Handing: 90

Wiring diagram for connection to: mains - VSD - motor
Rotation: LG

